

This release is also available at: http://www.aivlasoft.com/download/AivlaSoft_EFB_1.3.0_Press_Release.pdf

Review editors who require a longer period for product evaluation can write to info@aivlasoft.com and request a complimentary “review license.”

AivlaSoft GmbH Releases v1.3.0 of Electronic Flight Bag

March 11, 2011 – AivlaSoft GmbH is pleased to announce another update to their award-winning utility *Electronic Flight Bag (EFB)* for Microsoft FSX. EFB version 1.3.0 enhances existing charting and route planning – and adds new features: support for online flying on VATSIM and IVAO™ networks – visible AI / Multiplayer / Online traffic – and new Navigraph data, including Transition Altitude / Transition Level values.

AivlaSoft continues to support its customers by providing this EFB update free of charge.

About EFB

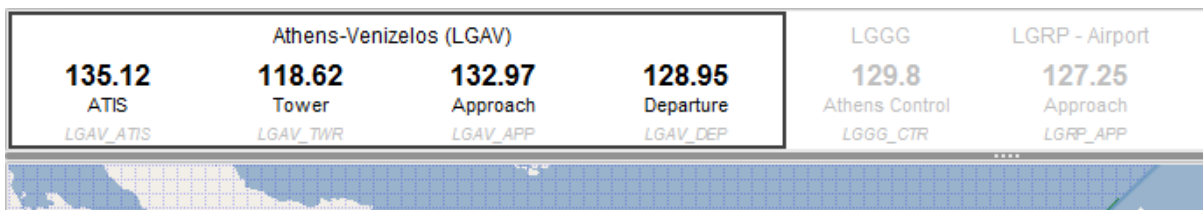
AivlaSoft GmbH's *Electronic Flight Bag* for FSX provides flight-simulator pilots with route planning, flightlog recording, checklist management, and chart viewing facilities for unparalleled flight planning and situational awareness capabilities.

Dividing the typical flight into specific segments – Origin Ground, Departure, Enroute, Arrival, Approach, and Destination Ground – EFB is able to provide segment-specific checklists and SID / STAR / Approach charts taken from Navigraph's FMS data. (An enhanced version of AIRAC 1101 is provided for free with EFB, courtesy of Navigraph.)

EFB 1.3.0 is available by immediate download from <http://www.aivlasoft.com/> as a fully-functional 30-day trial version that can be converted to a registered version by simple purchase of a license key.

You're Not Alone

EFB's most anticipated new features allow IVAO™ and VATSIM users to view active controllers and regions as you plan and fly your route, and – in a feature unique to EFB – to provide pilots with a COM frequency strip that's customized to your current flight and which prompts you to change to the *correct* frequency, *on time*.



And whether you fly with an online network, in a multiplayer session, or with one of the major AI traffic packages and ATC add-ons, EFB gives you the full view of your crowded airways and tarmacs. It's like having a full-speed ADS-B connection right in your cockpit!



New Data

Beginning with AIRAC 1103, Navigraph will publish Transition, Final Approach Fix and Missed Approach Point data in a new format for AivlaSoft customers. For this reason, AivlaSoft strongly encourages its customers who enjoy the benefits of regular Navigraph AIRAC updates to install EFB 1.3.0 prior to the release of AIRAC 1103. Pre 1.3.0 versions of EFB *will not* be able to read future Navigraph updates published in the “AivlaSoft” format. (Navigraph AIRAC updates in the “PMDG” format can be read by EFB.)

New Heights

- GASA (Geographic area safe altitude) and MEF (maximum elevation figures, on FAA sectional charts) values on enroute-, departure-, arrival- and approach-charts.
- “Descend Now” function in the Flight Information System to start the descent before T/D.
- A newly collected and vetted list of transition altitudes and transition levels displayed on Airport, Departure, Arrival and Approach charts!



like
are

YPKU - Kununurra (Australia - Western Australia)

Transition Altitude 10000 ft
Transition Level FL110

Ease of Control

- New Ground chart layout with more details – jetways, gates, ramps, fuel spots are clearly defined.
- All possible COM frequencies are combined into six groups that can be selected from within EFB.
- New "chart options bar" makes adjusting your view options easier than ever.
- EFB can now save routes as VFR plans.
- Sunrise and sunset times calculated for each airport so you'll never get caught in the dark.

Fantastic new features, professional appearance, superior performance, and world class online support – it's never been a better time to add an AivlaSoft EFB to your flight-sim cockpit!

For more information contact:

AivlaSoft GmbH
8627 Grüningen
Switzerland

www.aivlasoft.com
support@aivlasoft.com

Copyrights and Trademarks

Microsoft, Flight Simulator X, FSX, Windows 7, Windows Vista, Windows XP and Windows are either registered trademarks or trademarks of Microsoft Corporation in the United States and/or other countries.

“Real Environment Xtreme” is a trademark of Real Environment Simulations, Inc.

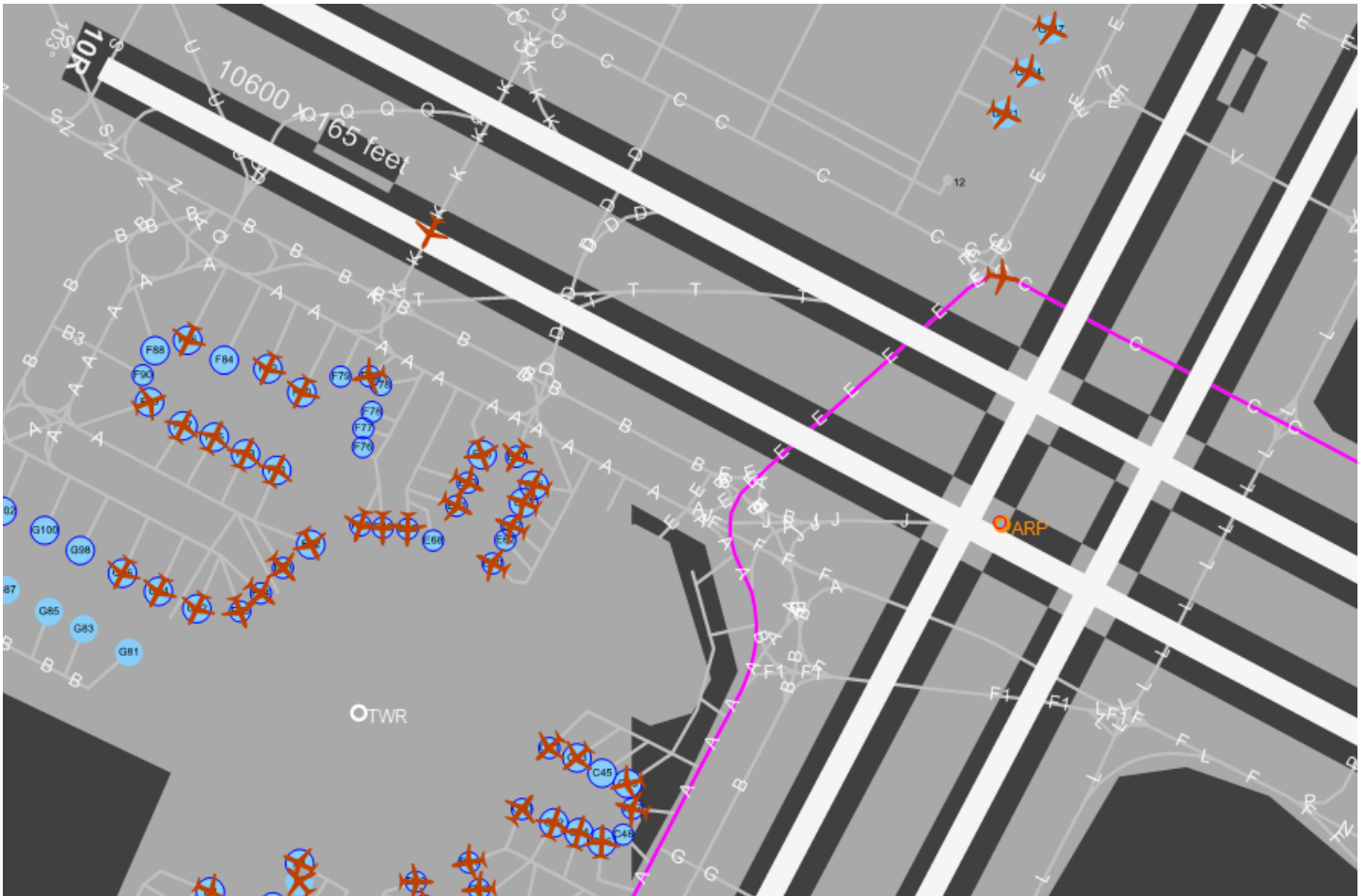
“IVA0” is a trademark of International Virtual Aviation Organisation.

Other products and services mentioned in this manual are the property of their respective owners. All rights reserved.

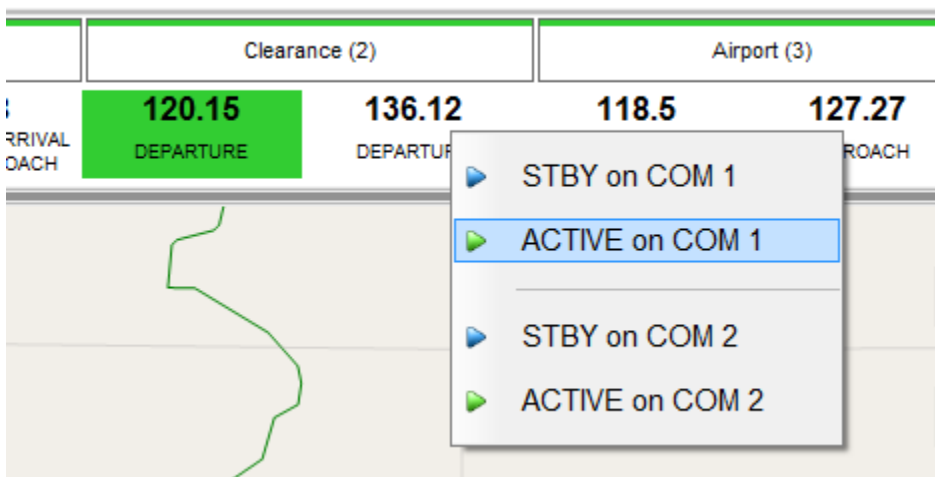
No affiliation with AivlaSoft GmbH or its products and services should be inferred or implied by usage herein.

The following images and captions may be freely used to illustrate news stories about AivlaSoft EFB.

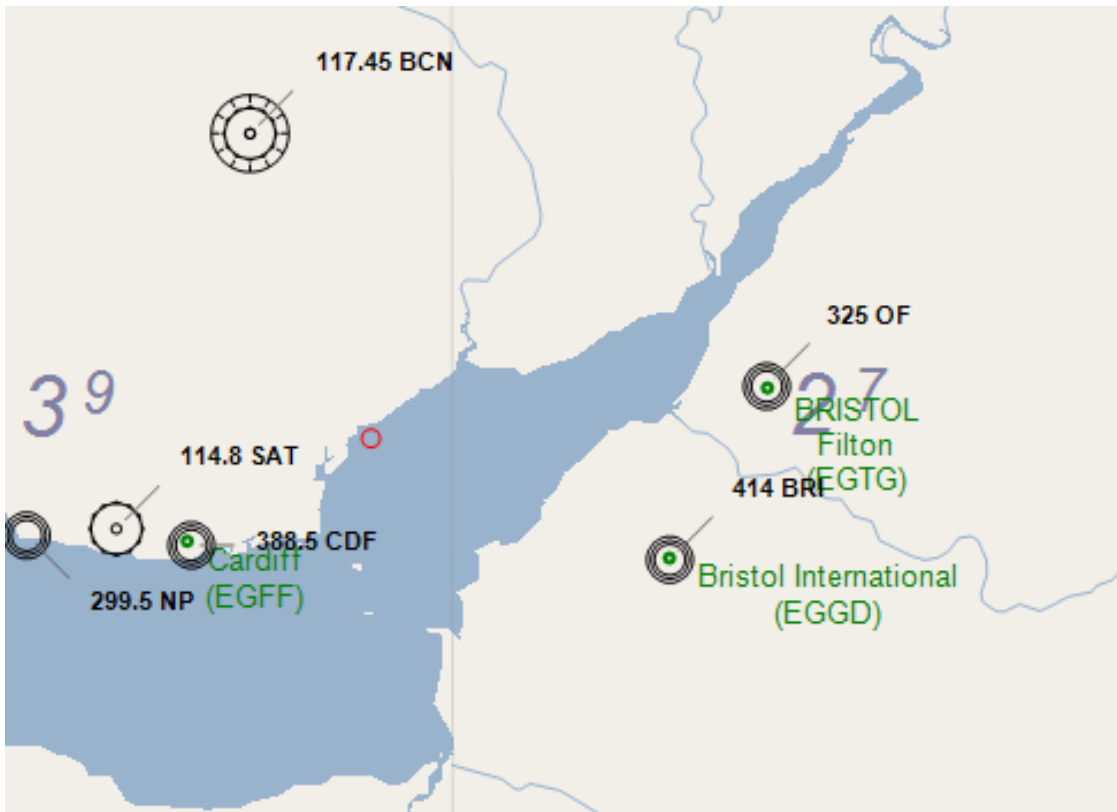
1. The fog has rolled in making a busy night for KSFO ground. The 90-minute clearances drop off quickly.



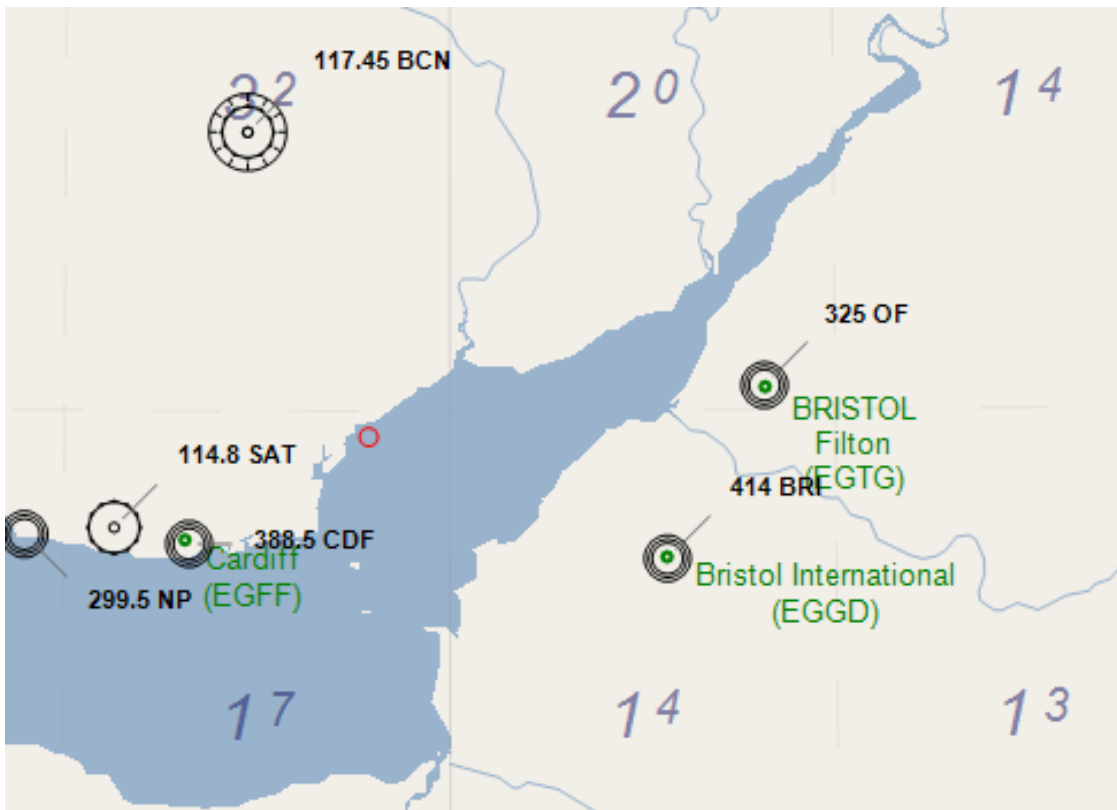
2. Setting the Departure Controller frequency with just a single click.



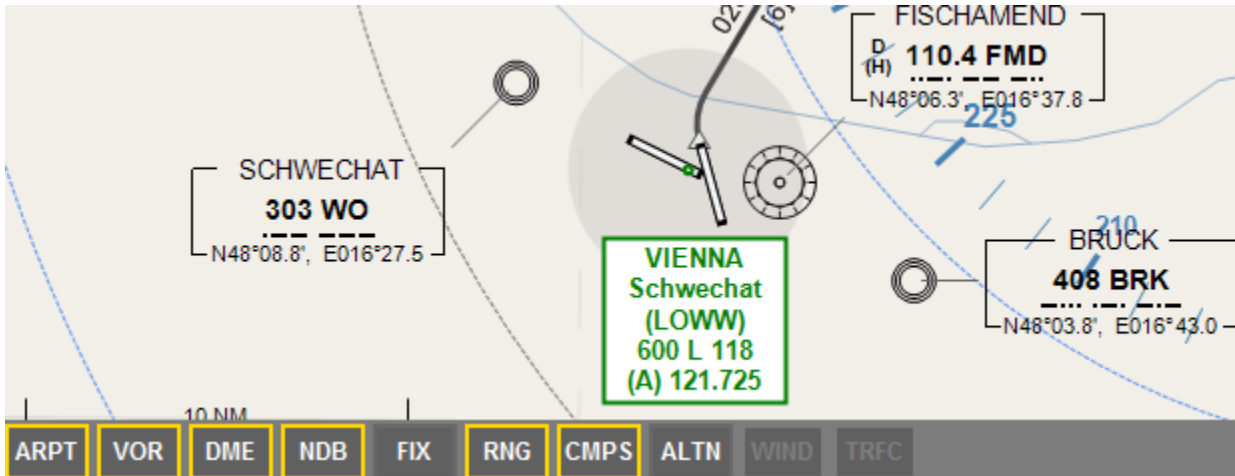
3. GASA – Geographic Area Safe Altitude for the Cardiff – Bristol area.



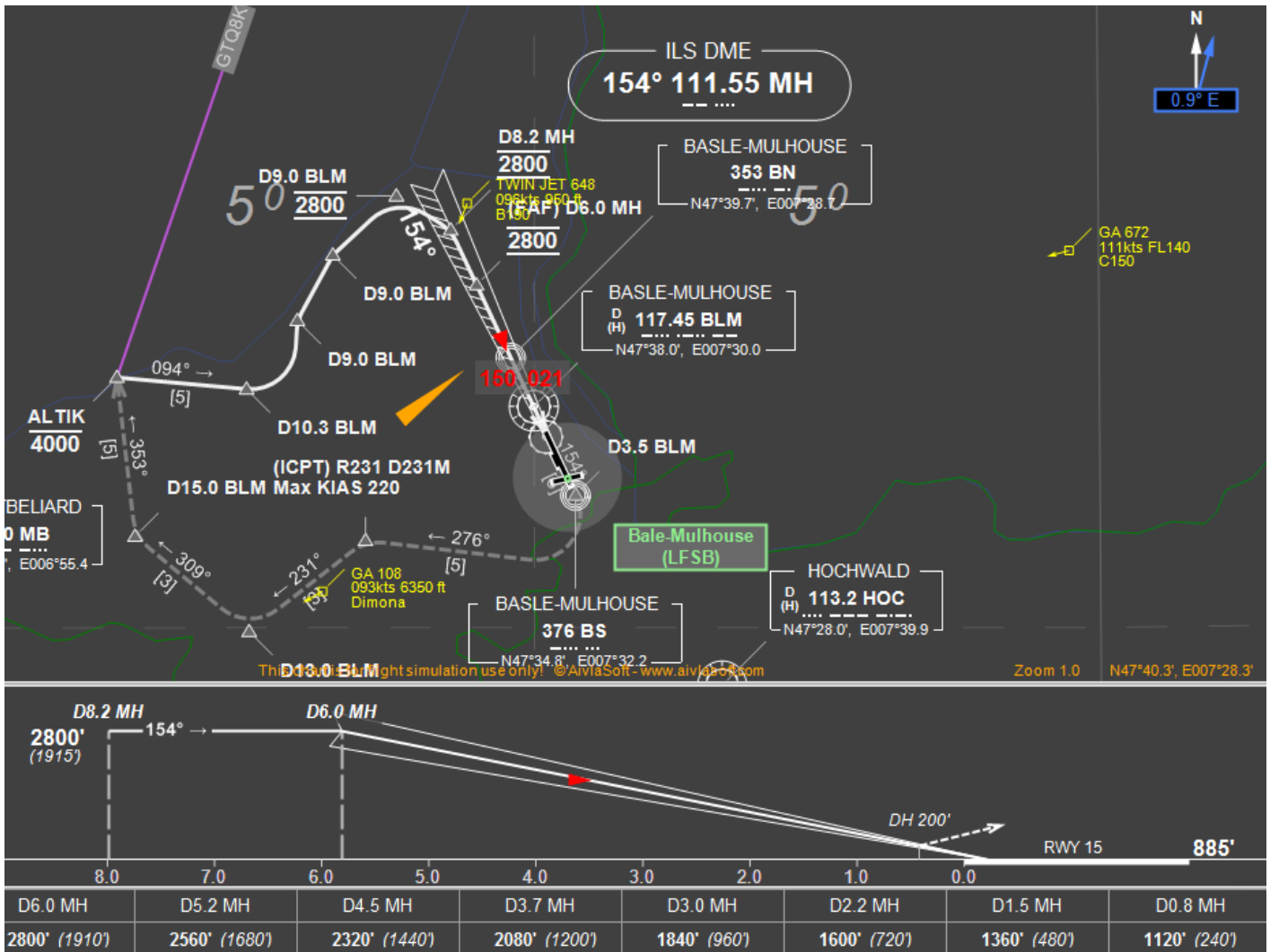
4. MEA – Maximum Elevation Figures for the Cardiff – Bristol area.



5. Selecting Departure Chart options for Runway 34, LOWW.



6. You're Number One for a midnight landing at Basle.



7. Finding your way to park has never been easier!



8. You're nearly there – watch that traffic to your 9 o'clock!

